



Quick Guide

Of the VectorSoft DSP CUT

Requirement for your computer

1. Operating System: Win98/2000/XP

2. Hardware: RAM: 128M or above

- Hard disk space: 1G or above
- CPU: INTEL Pentium III or above
- Display: 800*600 dots
- Others: USB 1.1 support

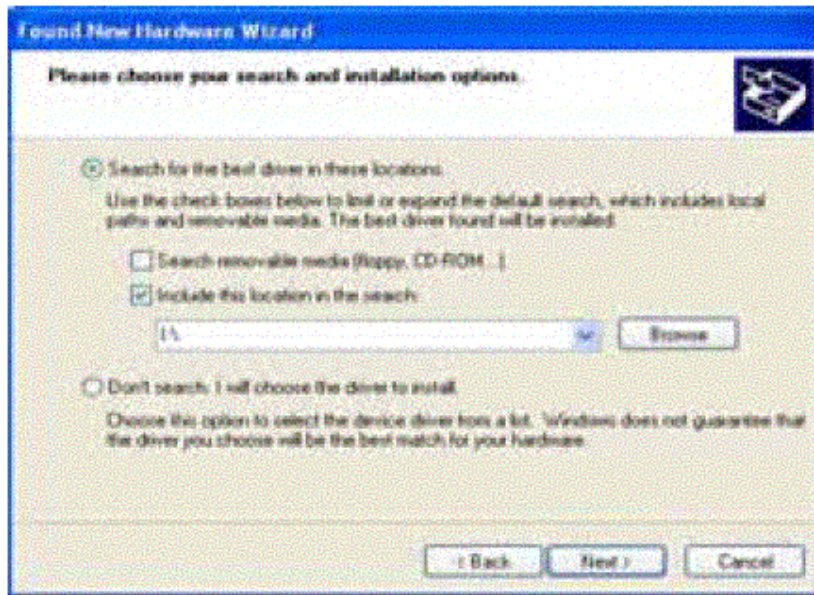
Installing the device drivers

1. Installing the software protection key driver

Insert the software protection key into a USB port of your computer and the system will remind you that “a new hardware is found”. Then the setup will run automatically as following:



Click Next to continue:



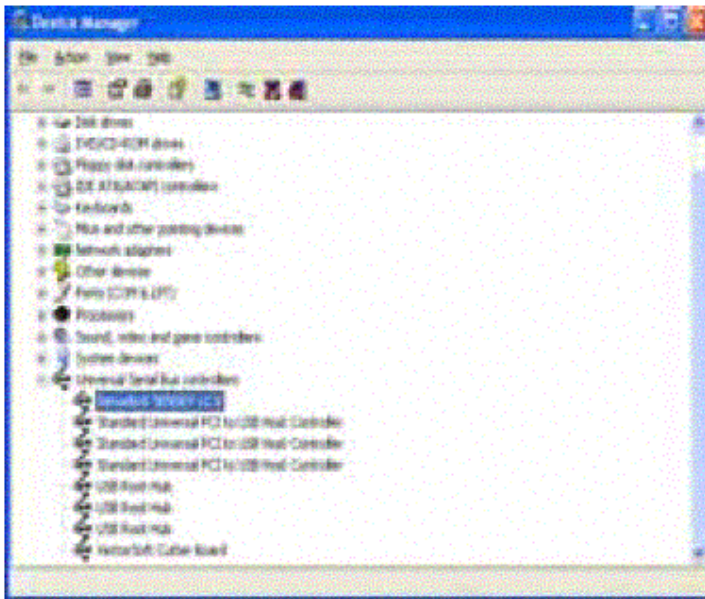
Select **Browse** in the above window and you will see a dialog box displaying “Browse For Folder”, choose the driver directory as “USB Driver \lockdrive” and click OK to return to the installation. Now click Next to continue installing. When the installation is finished, select Finish to quit.

2. Installing the hardware driver

Connect your plotter to the power source and turn it on. Also, use the USB cable to connect the plotter and your computer. The system will detect the plotter and tell you “a new hardware is found”. The installation process is similar to the one for the protection key. However, you need to note here that you should choose “USB Driver \ Cutdrive\WinXP” as the driver directory in the dialog box “Browse For Folder”. (For OS Win98, the directory should be “USB_Driver \Cutdrive\Win98”etc.)

3. Checking the device driver installations

Check first if your computer is connected with the protection key software and the plotter . Select **My Computer** on your desktop, click your right mouse button to select **Properties** . Then choose **Hardware** in "System Properties" to open "Universal Serial Bus controllers". If "Senselock SENSE4 v2.0" is present, it indicates that the software protection key has been correctly installed and it is running.If "VectorSoft Cutter Board" is present, it indicates that the plotter driver has been correctly installed and it is running

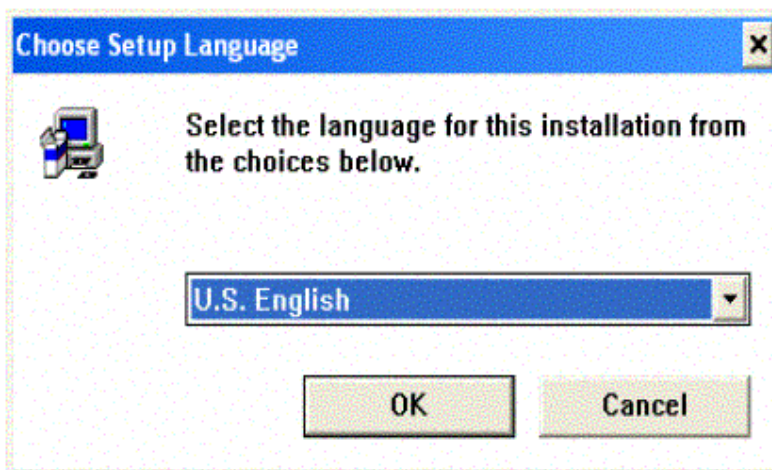


Installing the ArtCut software

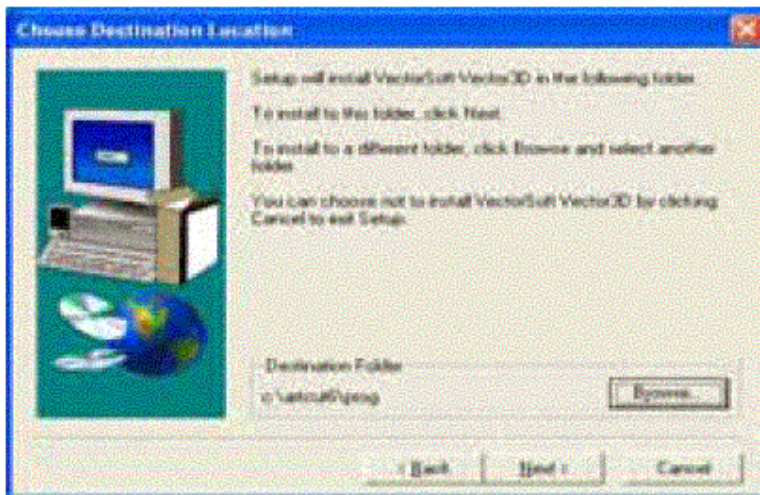
Please refer to the Installation manual of ArtCut

Installing the cutting software

Insert the supplied CD into your computer's CD-ROM drive, double click **Vector-wt.exe** to install and the following dialog box will appear:



Choose the language you prefer, click OK to continue installing and the following window will appear:

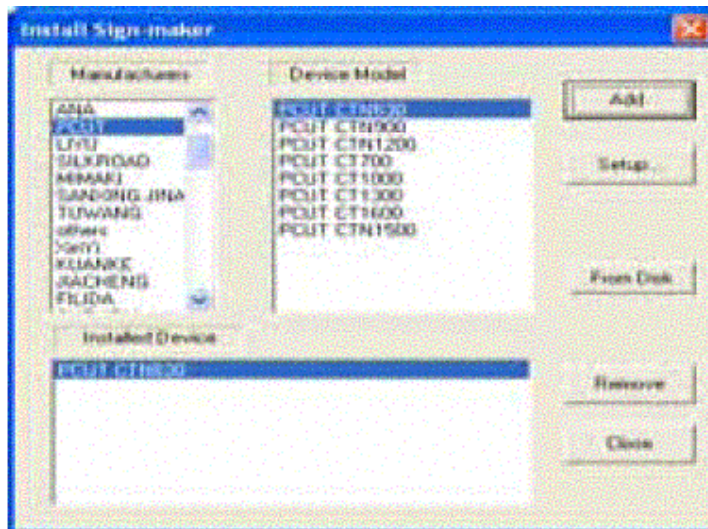


If you continue installing, you will be asked to choose the directory where the software will be installed. Now you need to select **Browse** , note here you must set the directory of the software under the folder "progeng".

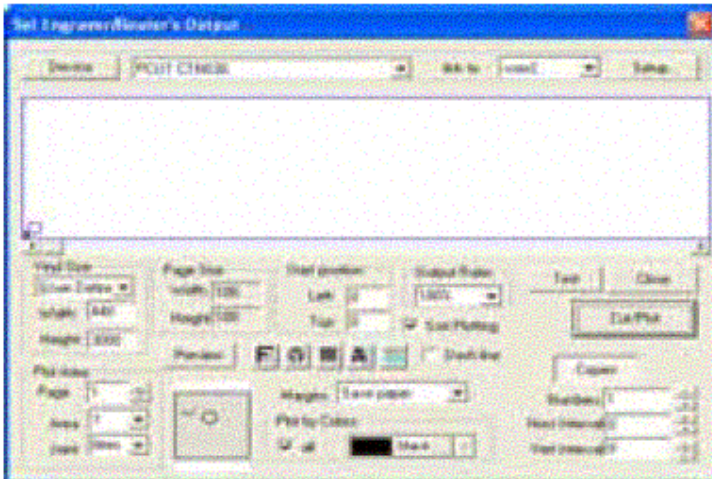
Click **Next** to continue installing, the software will then be installed into your computer.

Launching the software

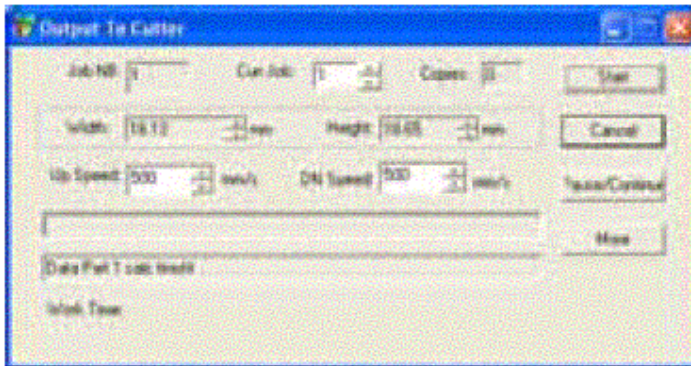
Make sure first that your computer is connected to both the software protection key and the plotter, turn on the plotter. Run ArtCut to work with it (For detailed operations, please refer to the ArtCut user manual). If this is your first time of . doing an output, the following window will appear:



As shown above, select Add to add a hardware then the following will appear:



Select **Cut/Plot** to enter the following window:



Finally, select Start to start plotting and cutting. For detailed instruction of operating the plotter and the software, please refer to "KINGCUT user manual" on the supplied CD and "ArtCut user manual"